

# National Accessibility Evaluation TAP Meeting

May 29, 2019



# Agenda

1. Welcome from MnDOT
2. Introductions
3. Project Update
4. Bike Data & Report Discussion
5. Census LEHD Data Availability
6. Partner Check-In Highlights
7. Member Updates
8. Other Business

# Welcome from MnDOT

Deanna Belden



# Introductions

Claire Johnson

# Project Updates

Andrew Owen

# Project Updates

## Data and Reports

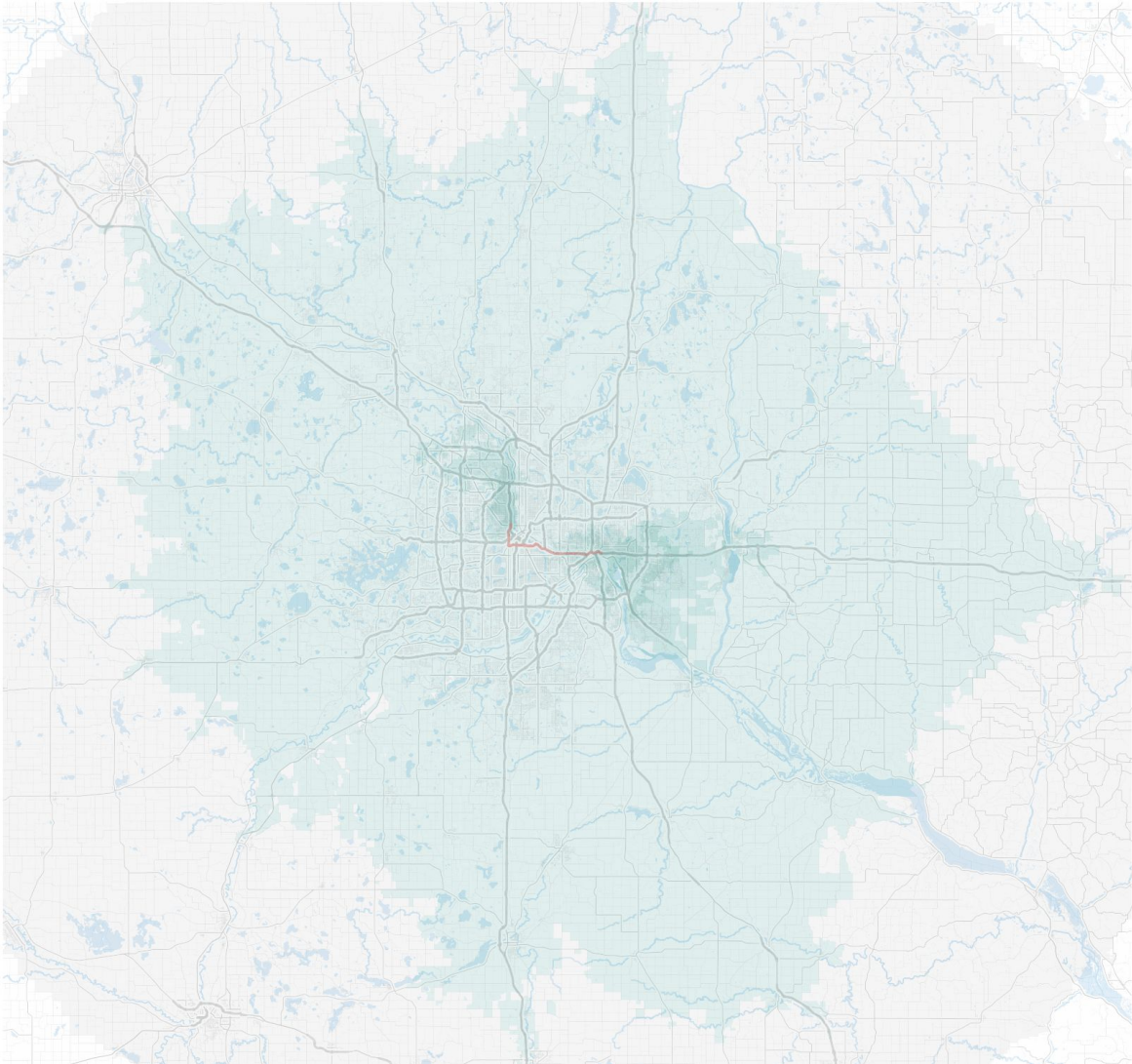
- Bike 2017
  - Data delivered
  - Reports available over next two weeks
  - Discuss timing of national report release
- Transit 2018, Auto 2018
  - Network data ready
  - Data was scheduled for June, assuming LEHD data available
  - Discuss handling of LEHD data delays

# Project Updates

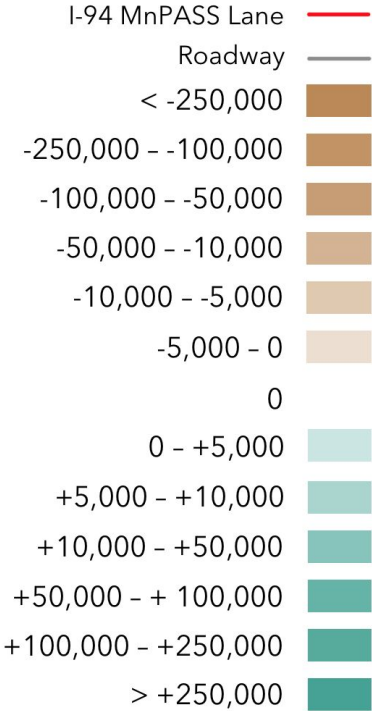
## Scenario Evaluations

- I-94 Managed Lanes (MnDOT)
  - Impacts of managed lanes on auto & transit access to jobs
  - Presenting at Midwestern District ITE meeting, June 19–20
- Arterial BRT plans (Metropolitan Council)
  - In progress, received transit schedule scenarios from Metro Transit

# Scenario Evaluation: I-94 Managed Lanes (MnDOT)

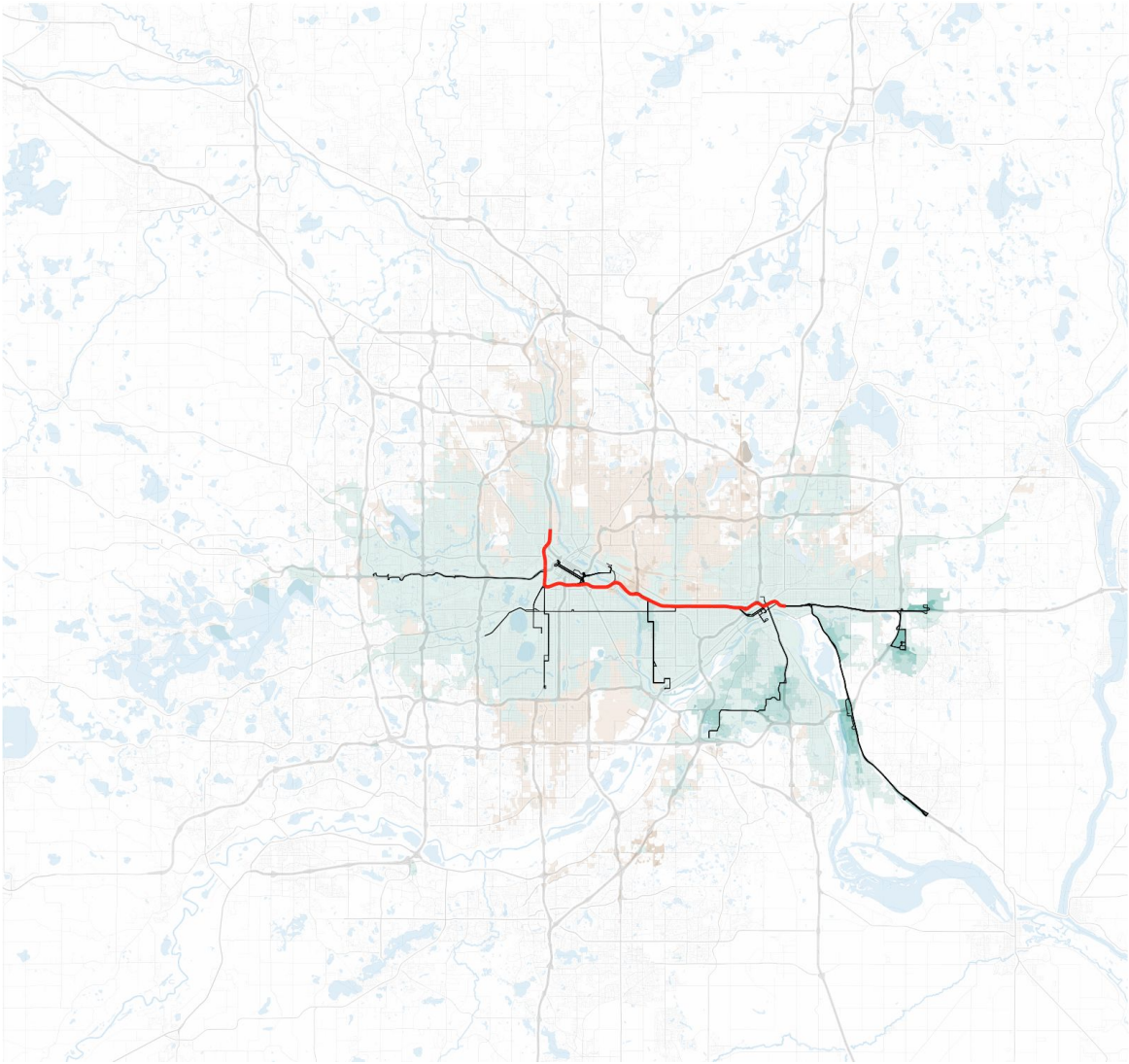


Change in jobs by auto  
(time-weighted)





# Scenario Evaluation: I-94 Managed Lanes (MnDOT)



**Change in jobs by transit**  
**(time-weighted)**

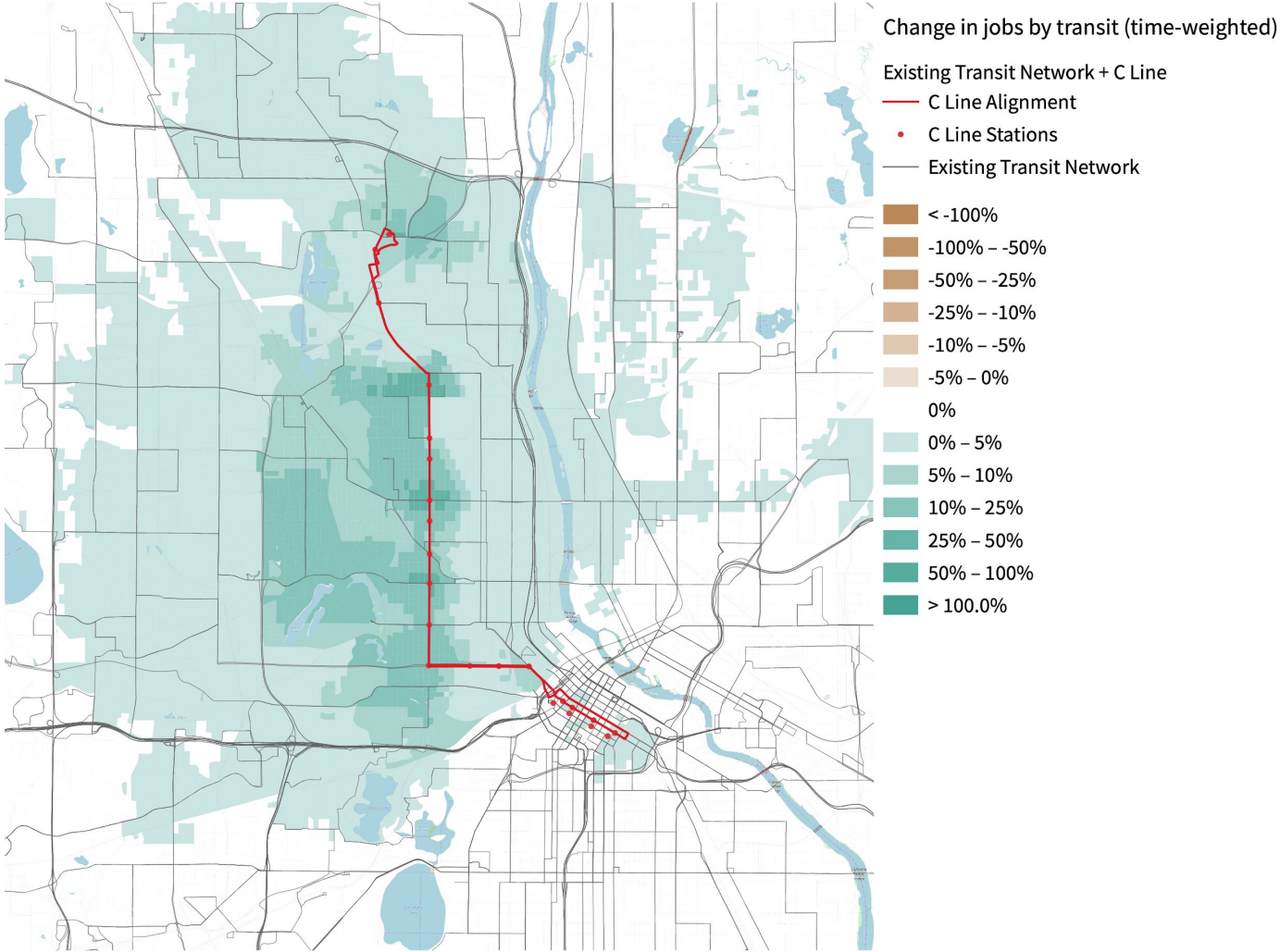
- I-94 MnPASS Lane
- I-94 Transit Routes
- Rivers/Lakes
- < -100%
- -100% – -50%
- -50% – -25%
- -25% – -10%
- -10% – -5%
- -5% – -0
- 0
- 0 – +5%
- +5% – +10%
- +10% – +25%
- +25% – +50%
- +50% – +100%
- > +100%

# Project Updates

## Scenario Evaluations

- I-94 Managed Lanes (MnDOT)
  - Impacts of managed lanes on auto & transit access to jobs
  - Presenting at Midwestern District ITE meeting, June 19–20
- Arterial BRT plans (Metropolitan Council)
  - In progress, received transit schedule scenarios from Metro Transit

# Scenario Evaluation: C Line ABRT (Metropolitan Council)



Percent change in accessibility between 7:00 to 9:00 am weekday using existing network + C Line

# Bike Data & Report Discussion

Brendan Murphy

# Bike Data & Reports - Status Updates

- Bike accessibility data — completed, distributed to partners
- Bike LTS network data — completed, distributed to partners
- National Bike report — being finalized currently, draft to partners mid next week (ca. 6/5)
- State partner bike reports — in progress, delivered to partners by end of next week (6/7)
- National Bike methodology report — draft delivered to partners by 6/14
- Note: walking excluded from Bike reports, but data are completed and will be distributed early next week

# Bike Data — Metrics

1. Low-Stress Accessibility (LTS 2)
2. Medium-Stress Accessibility (LTS 3)
3. Accessibility Ratio, Low-Stress to “Open Streets”

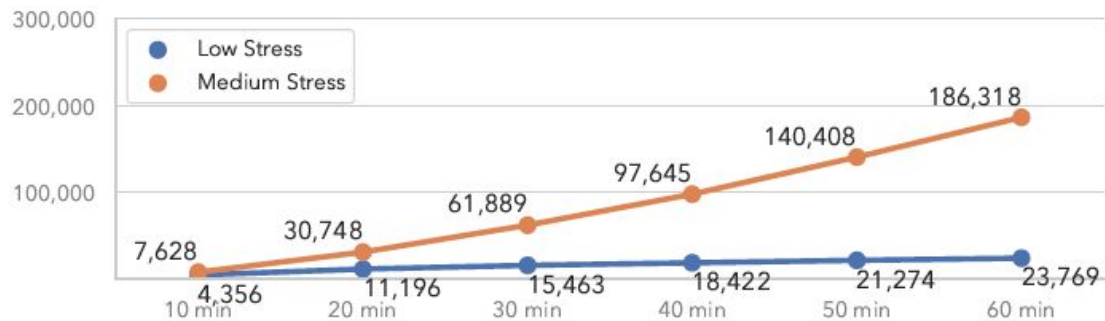
# Washington

Washington-Arlington-Alexandria, DC-VA-MD-WV

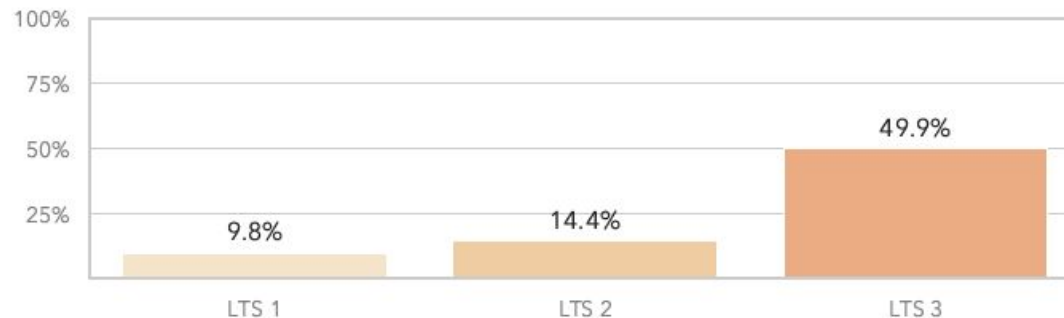
Rank by Weighted Low-Stress Bike Accessibility	6
Rank by Weighted Medium-Stress Bike Accessibility	5
Rank by Total Employment	7
Total Jobs	2,939,000
Average Job Density (per km <sup>2</sup> )	203
Total Workers	2,776,148
Average Worker Density (per km <sup>2</sup> )	191

*Job and worker totals are based on LEHD estimates and may not match other sources.*

## Biking Job Accessibility by Travel Time Threshold

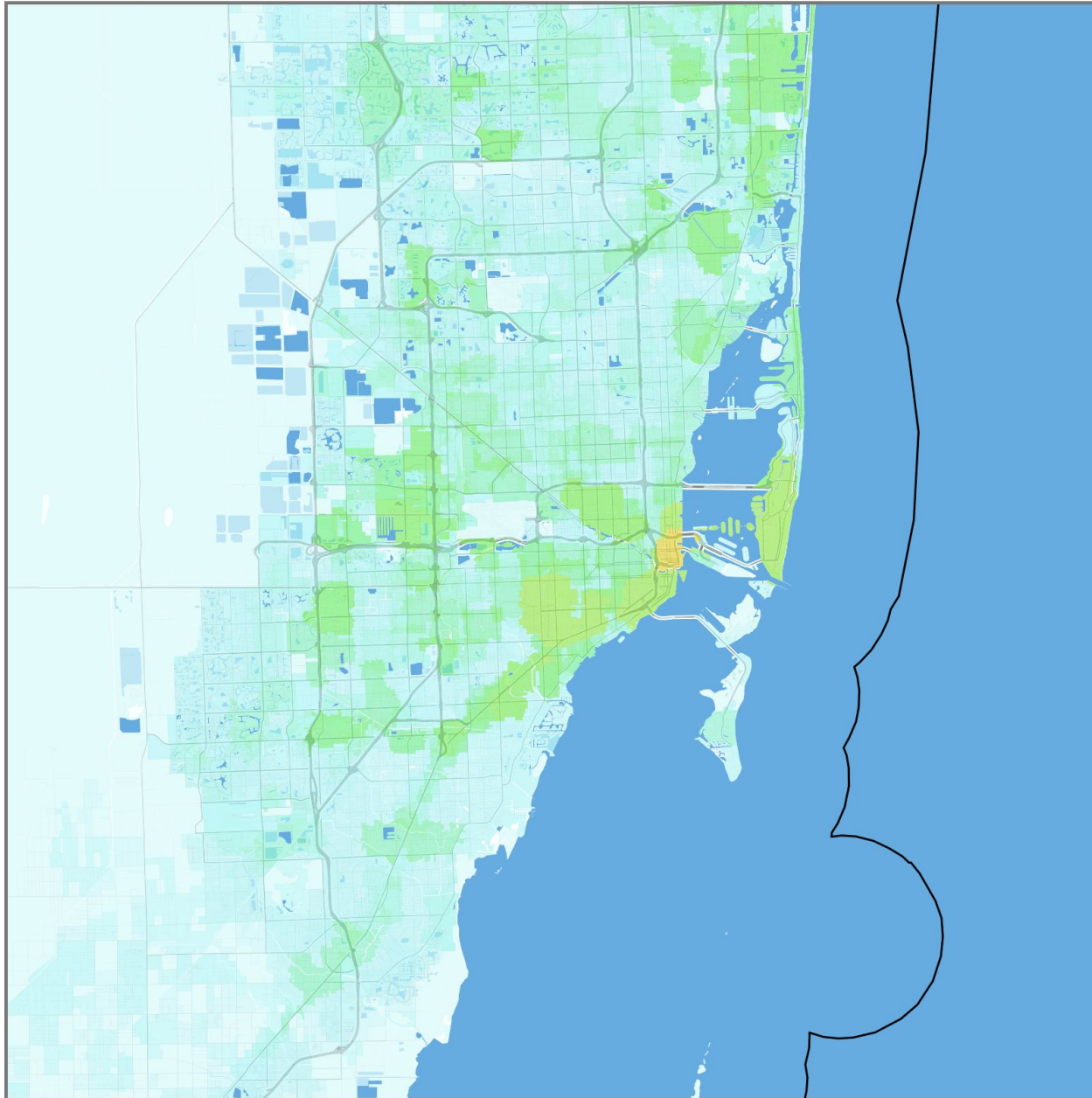


## Weighted Biking Job Accessibility Ratio, Bike Networks to Open Streets (LTS 4)



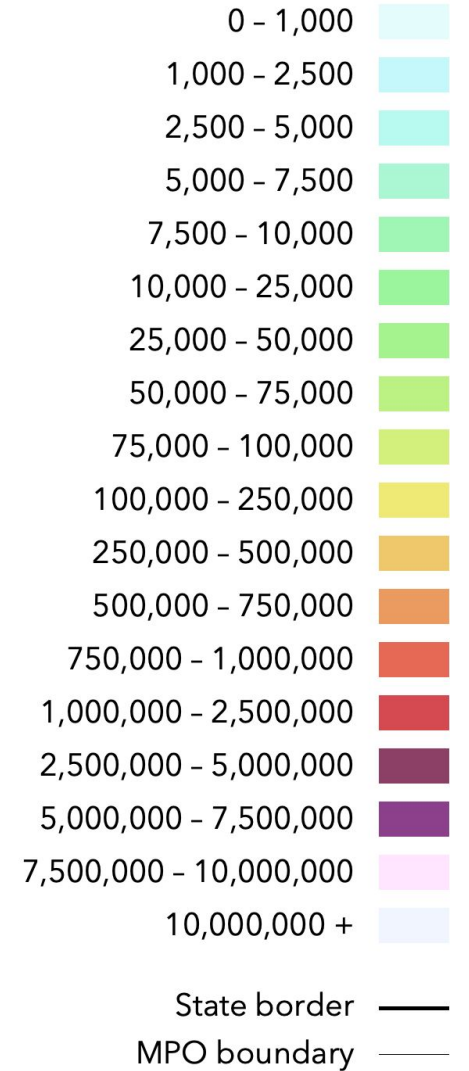
# Miami

Miami-Fort Lauderdale-Pompano Beach, FL



## Jobs within 30 minutes

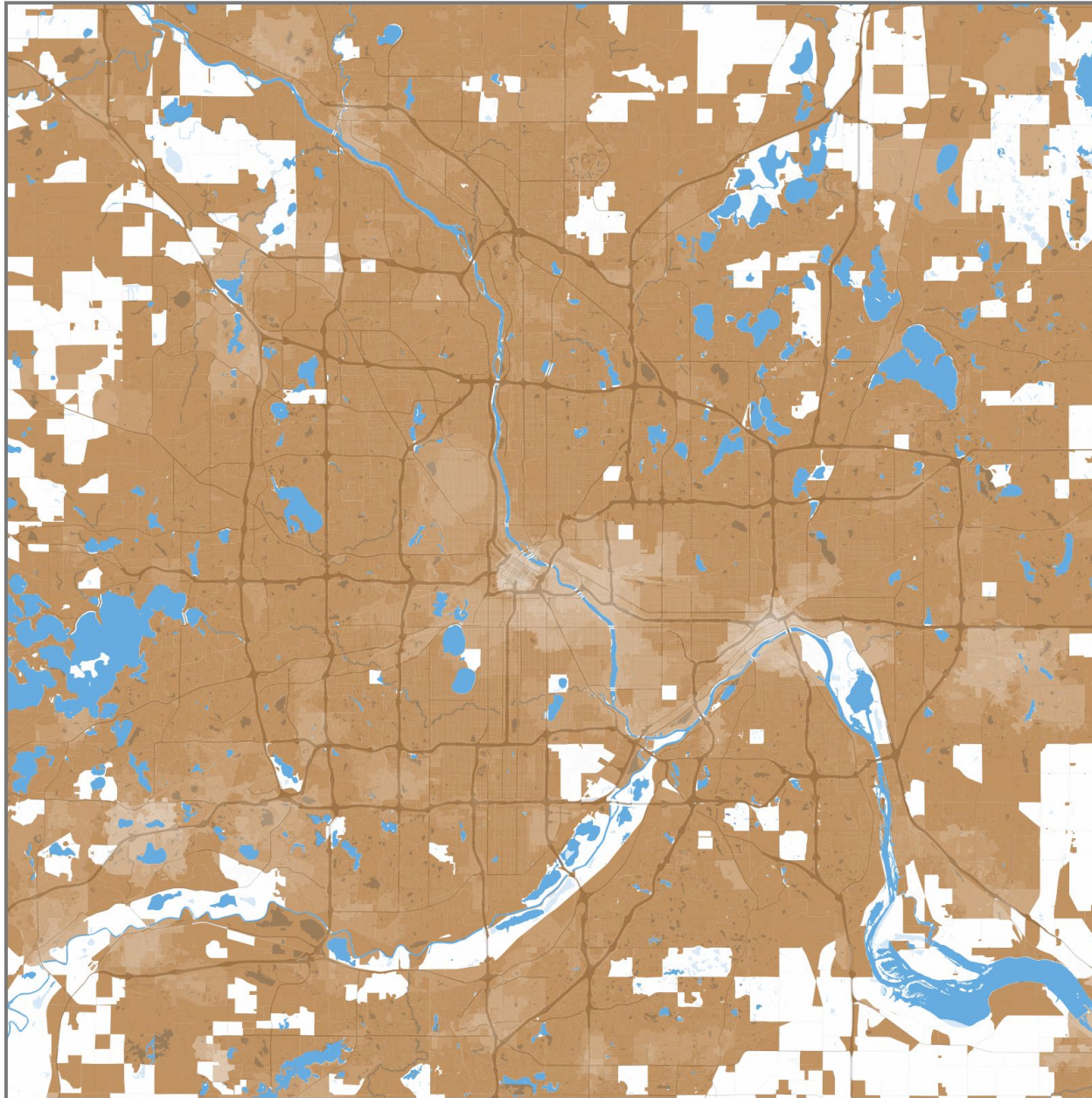
(Biking, low stress, AM peak)



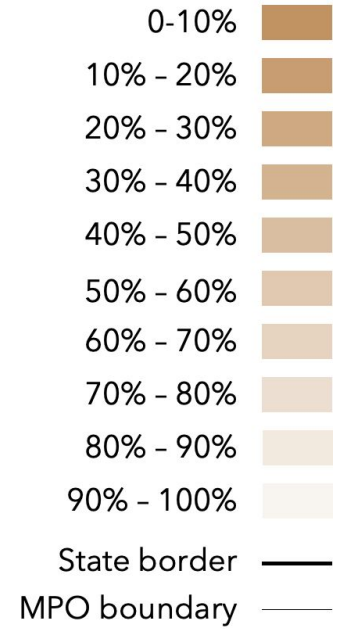


# Minneapolis

Minneapolis-St. Paul-Bloomington, MN-WI



Ratio of Weighted Jobs  
(Biking, Low-Stress to Open Streets)



# Bike Metrics — Top 10 Rankings

## Low-Stress

1. New York
2. San Francisco
3. Chicago
4. Denver
5. Philadelphia
6. Washington
7. Los Angeles
8. Portland
9. Seattle
10. San Jose

## Medium-Stress

1. New York
2. San Francisco
3. Chicago
4. Denver
5. Washington
6. Portland
7. Minneapolis–Saint Paul
8. Seattle
9. Boston
10. San Jose

# Bike 2017 Report Publication

- Week of July 8?

# Census LEHD Data Availability

Andrew Owen

# Census LEHD Data Availability

- Census' Longitudinal Household-Employer Dynamics data program provides job and worker location datasets for our accessibility calculations
- 2018 accessibility data & reports would be based on 2016 LEHD data
- LEHD 2016 delayed due to data use negotiations with federal Office of Personnel Management
- LEHD will go ahead with calculations **without federal workers**, available “this summer”

# Census LEHD Data Availability

Potential approaches:

- A. Calculate accessibility now, using updated transportation data but last year's LEHD data
  - Year-over-year changes would reflect only transportation effects
  - Data available ~end of July
- B. Wait for new LEHD data
  - Year-over-year changes reflect both transportation and employment effects
  - Interpretation complicated by removal of federal employees
  - Data available ~August–October, depending on availability of LEHD update
- C. Wait for new LEHD data, then calculate accessibility using **both** LEHD data years
  - Opportunity to evaluate both sets of data before deciding what is most valuable to report
  - Might be able to use old data to adjust for federal worker difference in new data
  - Data available ~August–October, depending on availability of LEHD update

# Partner Check-In Highlights

Andrew Owen

# Partner Check-In Highlights

- 4 conversations so far, another next week
- Common themes:
  - Current data formats are a barrier to use
    - We're evaluating alternative formats that are more GIS-ready, testing with partners soon
  - Desire for assistance in helping other departments/divisions understand and use accessibility data
    - We're beginning to outline summary documents and training webinars targeted at DOT staff beyond panel members
  - Looking for guidance and examples of how accessibility can/should be integrated with planning processes
    - We can help with scenario evaluations, including data preparation
    - Continue sharing partner experiences
    - Monitoring NCHRP 08-121 "Accessibility in Practice"



# Member Updates

# Member Updates

- TDOT — congestion data used in public outreach planning, coverage in ArcUser magazine
  - <https://www.esri.com/about/newsroom/arcuser/environmental-justice/>

# Other Business

Claire Johnson

# Thank you!

